

## Atlantean Road: The Bimini Beach-Rock

---

Charles Berlitz and other writers have rhapsodized about the discovery of Atlantean ruins off the coast of Bimini in the Caribbean. These “ruins” consist of “roads” that run under the sea parallel to the shore. Marine archaeologist J. Manson Valentine and historian David D. Zink, funded by the Edgar Cayce Foundation, came to the conclusion that these roads were the “real goods.”

However, geologists John Gifford and Eugene A. Shinn have easily proved (see *Sea Frontiers*, May-June 1978) that the Bimini Road of Atlantis is merely an example of what is called “beach rock.” (See also the article by archaeologists Marshall McKusick and Shinn in *Nature* 287 (1980): 11-12.) Beach rock is a rapidly formed conglomerate of sand grains cemented together by calcium carbonate in the sea to form slabs that break into strips when undercut by tidal action; these then can present the appearance of large “bricks” of stone laid together.

In researching this subject, I found that beach rock was found on the coast of Australia. Visiting there recently at the invitation of Dick Smith, I was flown along the coast in a helicopter and saw enormous masses of this material along the shore north of Sydney. Examples of photos I took on that occasion are shown in Figures 1-3.

Do Berlitz, Valentine, and Zink ask us to believe that Atlantis ran a branch office in Australia? Or did the Atlanteans reinforce the coastline of the Australian continent as an engineering experiment?

— James Randi



FIGURE 1. "Young" beach rock presents this appearance. The first fractures are those passing from upper left to lower right. Secondary fractures occur afterwards, thus more or less randomly and not as regularly as the primary ones. The appearance of man-made "bricks" is quite strong.

FIGURE 2. Older beach rock is weathered so that cracks have eroded. The constant action of water-plus-sand abrasion sloshing back and forth cuts rounded edges — and further accretion of sand grains gives the impression of "mortar" between the individual rocks. As for scale, the round dark hole at top center is about ten feet across.

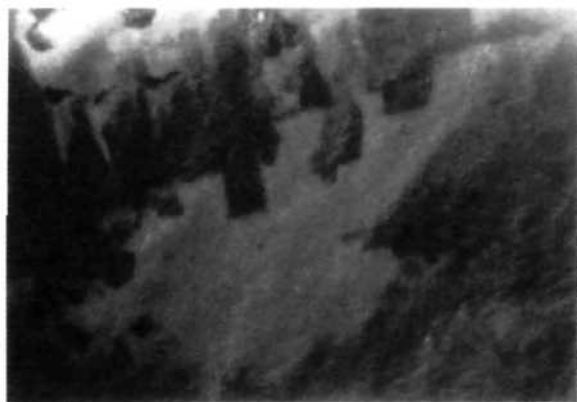


FIGURE 3. Seen underwater, beach rock formations look — to the uninformed — very much like ruins left behind by man.